

## Appendix 5: Design development

### KEY ISSUES



Tired benches and litter



Fairy lights and uplighters around the tree



Site is mostly hard landscape with drainage systems



Dark and shaded by tree canopy



Bulky Planters and visually obstructive



Hedges hard to maintain, unattractive

### KEY OPPORTUNITIES

#### Retain existing assets



Retain dappled light qualities through careful pruning to encourage use and thoroughfare

#### Unify + Declutter



Integrate seating and planters where possible to reduce and minimise clutter and connect to Phase 1a works

#### Futureproofing with planting



Increase planting areas and greening to allow for greater permeability and futureproofing site for flash floods. Allow for protection from the road and pollution but also maintain visibility through the site

#### Improve visibility and permeability



Break up the planter to allow for desirelines and better permeability allow visibility to One New Change. Improve accessibility

#### Celebrate history



Celebrate the site of Hoare's Bank, the oldest bank in the City and use this to inform play elements

#### Improve lighting



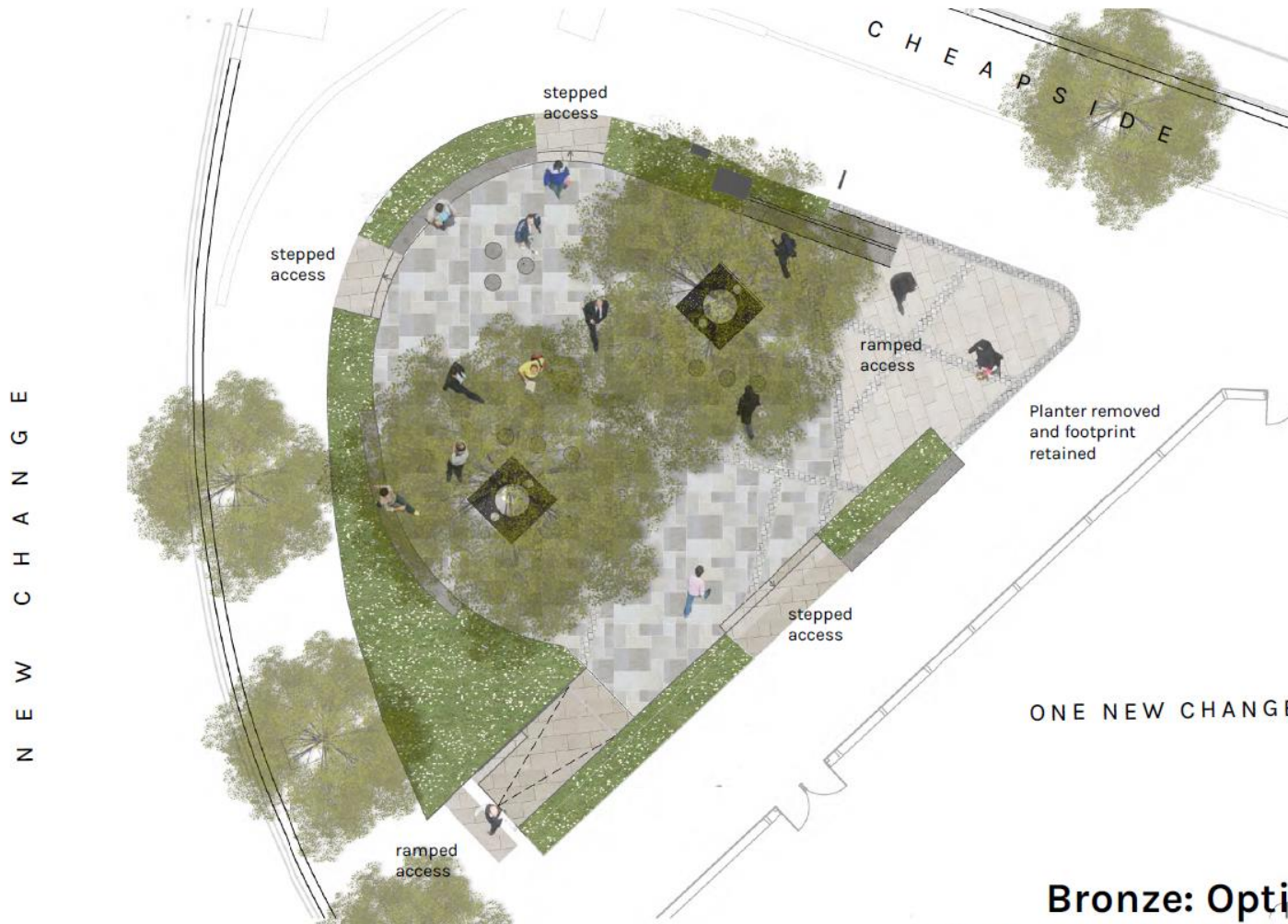
Introduce low level lighting in space to create a sense of an urban room- remove uplighters and fairy lights



## Greening Cheapside – Phase 1A (Completed 2019)



## Option 1 – “Bronze option”



GREENING CHEAPSIDE | SUNKEN GARDEN

**Bronze: Option 1**  
Reusing existing footprint of planters





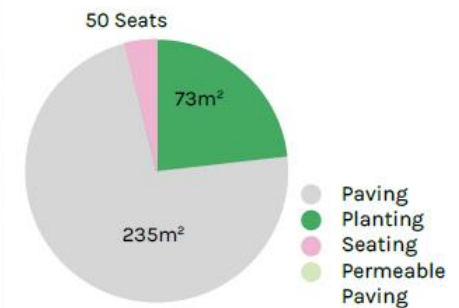
GREENING CHEAPSIDE | SUNKEN GARDEN

## Bronze: Option 1

existing footprint of planters

### Benefits of Scheme:

1. Openness and accessibility from corner of Cheapside
2. Reusing existing Yorkstone paving as much as possible
3. Retaining same level of planting but also introducing area for SuDS
4. Increased visibility through and to garden with new planting strategy



Seating	50 Seats
Planting	73m <sup>2</sup>
Paving	235m <sup>2</sup> Reused Yorkstone

## Artist impressions: Bronze option



*View within the Sunken Garden (daytime)*



*View within the Sunken Garden (night time)*





*View from Cheapside*

## Option 2 – “Silver option”:



**Silver: Option 2**

Fully accessible landscape



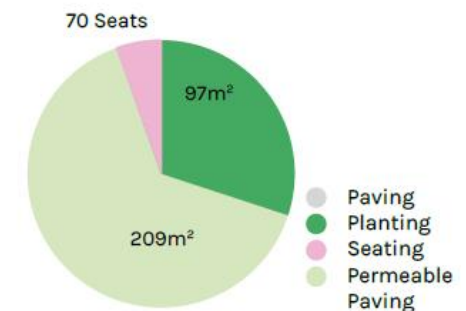


GREENING CHEAPSIDE | SUNKEN GARDEN

## Silver: Option 2

### Benefits of Scheme:

1. Openness and accessibility from corner of Cheapside
2. Fully accessible from all sides
3. Increased planting by 30% with SuDS strategy
4. Permeable surfacing for water run off
5. Increased visibility through and to garden with new planting strategy



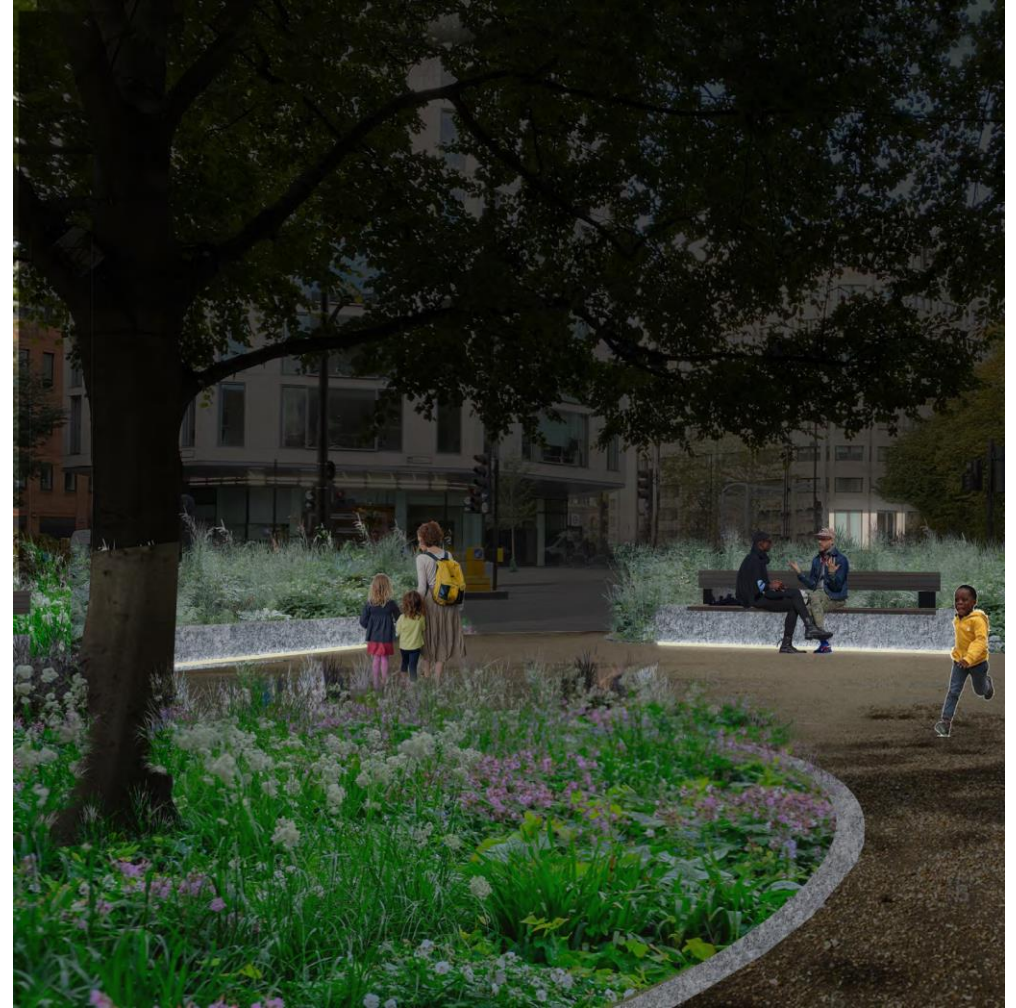
Seating	70 Seats
Planting	97m²
Paving	209m2 Self Binding Gravel



## Artist impressions: Silver option



*View within the Sunken Garden (daytime)*



*View within the Sunken Garden (night time)*





*View from Cheapside*



Option 3 – “Gold option”



Option 3

Historic grain large planters

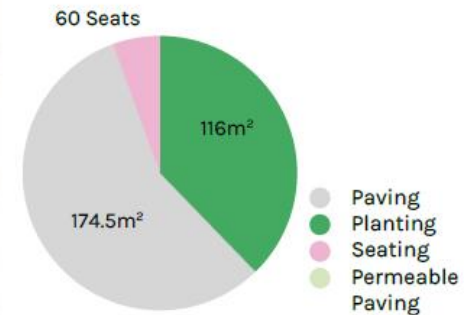
## Option 3- Use historic grain to create rain gardens



GREENING CHEAPSIDE | SUNKEN GARDEN

### Benefits of Scheme:

1. Openness and accessibility from corner of Cheapside
2. Increased planting by over 50% and large areas of greening with SuDS strategy
3. Memorial site to mark Hoare's Bank
4. Walkway through rain garden for play
5. Historic urban grain echoed in footprint of planters
6. Increased visibility through and to garden with new planting strategy



Seating	60 Seats
Planting	116m²
Paving	174.5m² Yorkstone



## Artist impressions: "Gold option"



*View within the Sunken Garden (daytime)*



*View within the Sunken garden (night time)*





***View from Cheapside***



